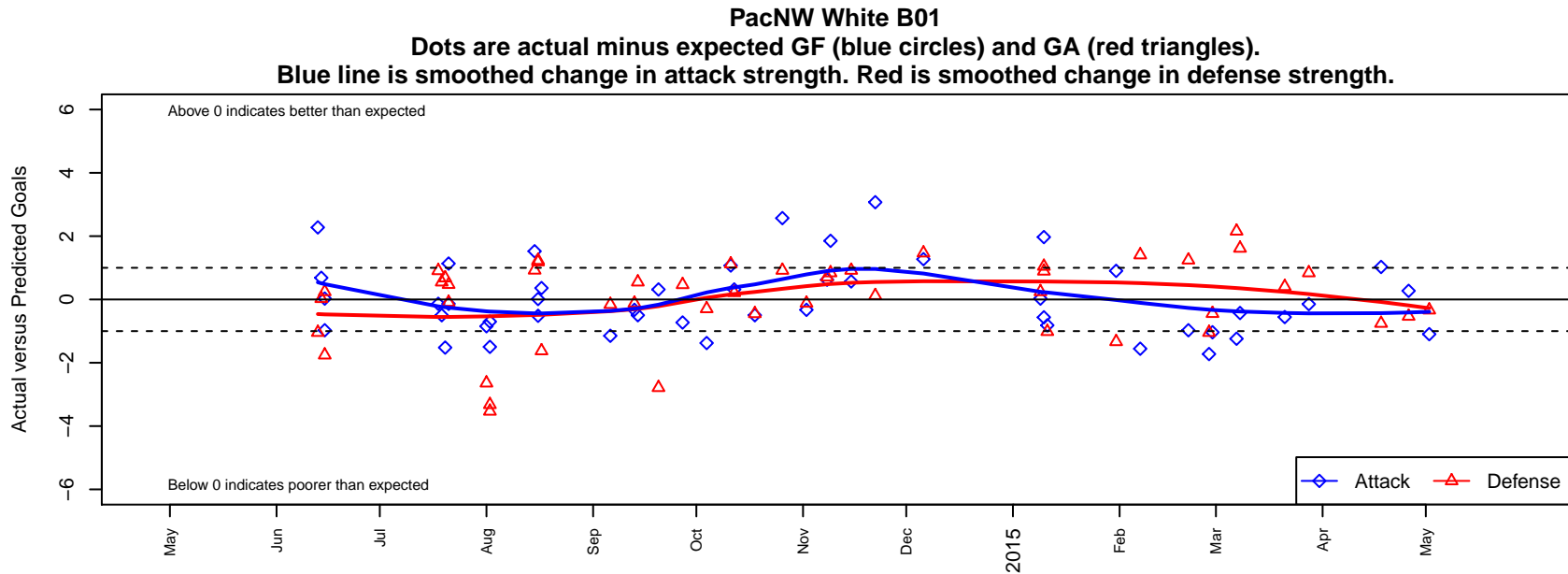


PacNW White B01

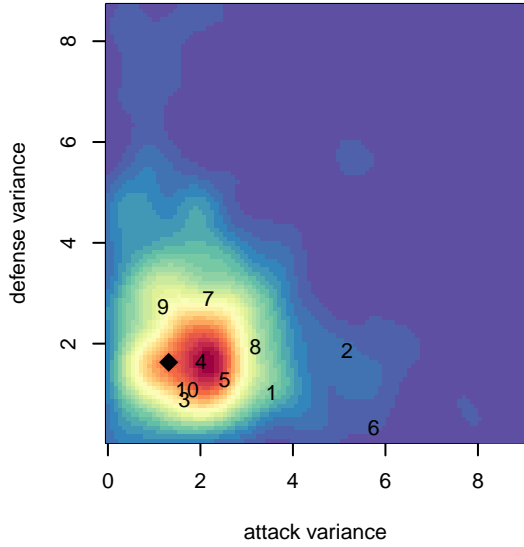
Pacific Northwest SC
 Tukwila, WA
 B01 total strength=1067
 attack=2.63 defense=2.41
 fall league = RCL B01 Div 3
 spr league = Win RCL B01 Div 2

alt names used:
 PacNW B01 White
 PACNW B01 WHITE (WA)
 PacNW B01 White
 PacNW B01 White
 PACNW B01 WHITE (WA)
 PacNW 01 White
 PacNW B01 White
 PacNW B01 White

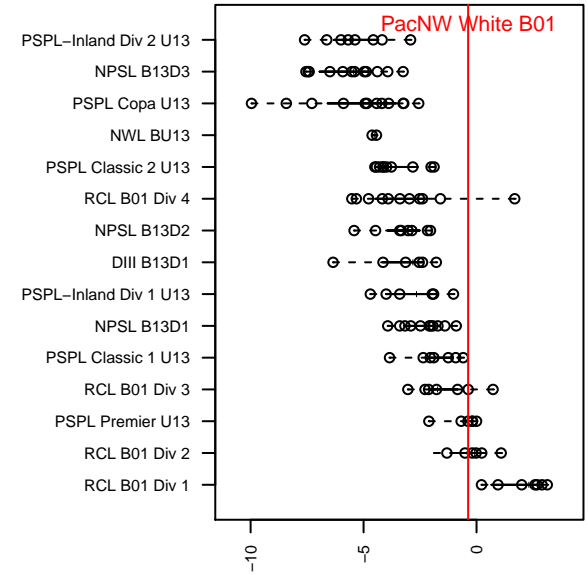
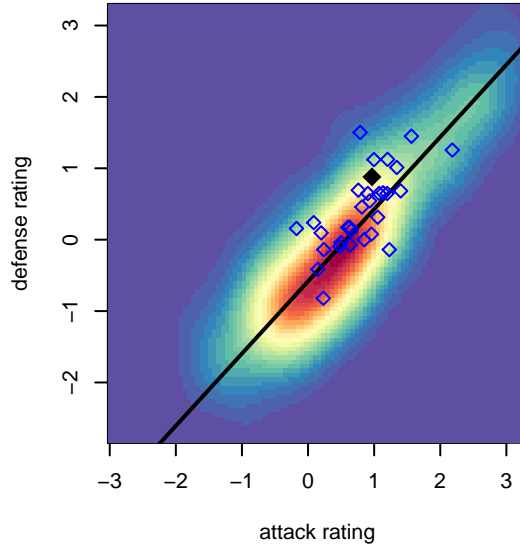
Venues played:
 2013 Challenge Cup B01 Division 2 – Challeng
 2014 Rainier Challenge Copa U13
 2014 Nike Crossfire Challenge Bronze U13
 2014 WA Rush Cup B13 Gold U13
 2014 Mt Hood Challenge U13
 2014 RCL B01 Div 3
 2014 PacNW Winter Classic Premier II U13
 2014 Win RCL B01 Div 2
 2014 WYS Presidents Cup B01 Division 1



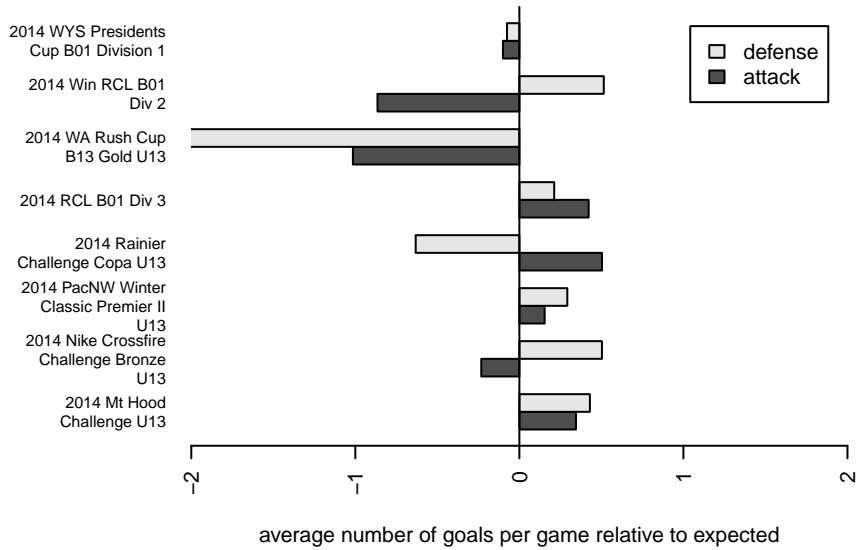
**attack and defense variance (black dot)
relative to other teams
and top 10 in region**



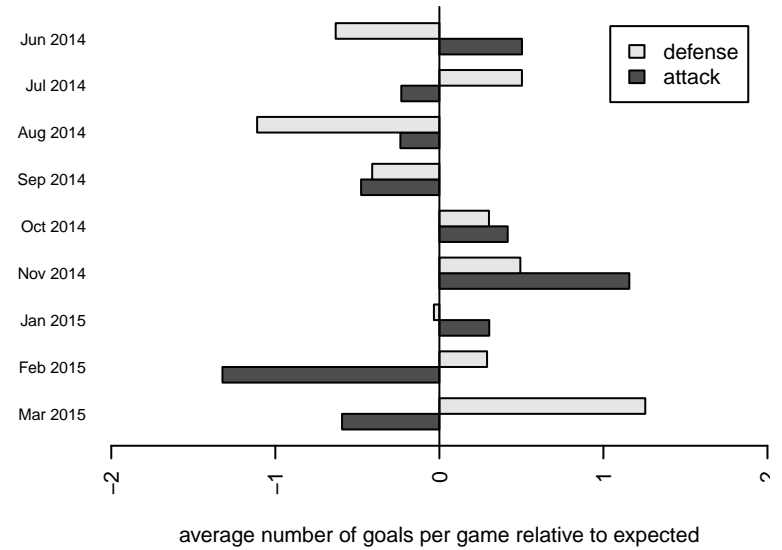
**attack and defense rating
relative to others at age
and all opponents in last 13 months**



Performance relative to 13 month average



Performance relative to 13 month average



| date | home | | away | | venue | pred.home | pred.away |
|------------|----------------------------|---|----------------------------|---|--|-----------|-----------|
| 2015-05-02 | Seattle United Tango B01 | 2 | PacNW White B01 | 0 | 2014 WYS Presidents Cup B01 Division 1 | 1.67 | 1.10 |
| 2015-04-26 | Slammers Orange B01 | 2 | PacNW White B01 | 3 | 2014 WYS Presidents Cup B01 Division 1 | 1.47 | 2.73 |
| 2015-04-18 | PacNW White B01 | 2 | Crossfire Premier B B01 | 2 | 2014 WYS Presidents Cup B01 Division 1 | 0.97 | 1.24 |
| 2015-03-28 | Blackhills FC Black B01 | 0 | PacNW White B01 | 3 | 2014 WYS Presidents Cup B01 Division 1 | 0.84 | 3.15 |
| 2015-03-21 | PacNW White B01 | 1 | NWN Red B01 | 1 | 2014 WYS Presidents Cup B01 Division 1 | 1.56 | 1.41 |
| 2015-03-08 | PacNW Blue B01 | 0 | PacNW White B01 | 1 | 2014 Win RCL B01 Div 2 | 1.62 | 1.43 |
| 2015-03-07 | PacNW White B01 | 0 | Snohomish United Black B01 | 0 | 2014 Win RCL B01 Div 2 | 1.24 | 2.16 |
| 2015-02-28 | WPFC White B01 | 2 | PacNW White B01 | 0 | 2014 Win RCL B01 Div 2 | 1.56 | 1.04 |
| 2015-02-27 | Eastside FC White B01 | 2 | PacNW White B01 | 1 | 2014 Win RCL B01 Div 2 | 0.96 | 2.72 |
| 2015-02-21 | PacNW White B01 | 0 | Crossfire Premier B B01 | 0 | 2014 Win RCL B01 Div 2 | 0.97 | 1.24 |
| 2015-02-07 | PacNW White B01 | 0 | NWN Red B01 | 0 | 2014 Win RCL B01 Div 2 | 1.56 | 1.41 |
| 2015-01-31 | Seattle United Tango B01 | 3 | PacNW White B01 | 2 | 2014 Win RCL B01 Div 2 | 1.67 | 1.10 |
| 2015-01-11 | Seattle Celtic Green B01 | 2 | PacNW White B01 | 1 | 2014 PacNW Winter Classic Premier II U13 | 0.99 | 1.82 |
| 2015-01-10 | Washington East SC B01 | 0 | PacNW White B01 | 5 | 2014 PacNW Winter Classic Premier II U13 | 1.05 | 3.03 |
| 2015-01-10 | PacNW White B01 | 2 | MVP Rapids Navy B01 | 0 | 2014 PacNW Winter Classic Premier II U13 | 2.56 | 0.89 |
| 2015-01-09 | PacNW White B01 | 1 | Crossfire Premier B B01 | 1 | 2014 PacNW Winter Classic Premier II U13 | 0.97 | 1.24 |
| 2014-12-06 | Slammers Orange B01 | 0 | PacNW White B01 | 4 | 2014 RCL B01 Div 3 | 1.47 | 2.73 |
| 2014-11-22 | PacNW White B01 | 6 | WA Rush B01 | 1 | 2014 RCL B01 Div 3 | 2.93 | 1.12 |
| 2014-11-15 | 3 Rivers Black B01 | 0 | PacNW White B01 | 1 | 2014 RCL B01 Div 3 | 0.92 | 0.43 |
| 2014-11-09 | PacNW White B01 | 5 | Blackhills FC Black B01 | 0 | 2014 RCL B01 Div 3 | 3.15 | 0.84 |
| 2014-11-08 | PacNW White B01 | 3 | SSC Shadow B B01 | 0 | 2014 RCL B01 Div 3 | 2.38 | 0.71 |
| 2014-11-02 | Kitsap Alliance FC Red B01 | 1 | PacNW White B01 | 2 | 2014 RCL B01 Div 3 | 0.88 | 2.33 |
| 2014-10-26 | PacNW White B01 | 3 | 3 Rivers Black B01 | 0 | 2014 RCL B01 Div 3 | 0.43 | 0.92 |
| 2014-10-18 | Crossfire Premier C B01 | 1 | PacNW White B01 | 3 | 2014 RCL B01 Div 3 | 0.55 | 3.50 |
| 2014-10-12 | PacNW White B01 | 2 | Whatcom Rangers Blue B01 | 1 | 2014 RCL B01 Div 3 | 1.68 | 1.21 |
| 2014-10-11 | WA Rush B01 | 0 | PacNW White B01 | 4 | 2014 RCL B01 Div 3 | 1.12 | 2.93 |
| 2014-10-04 | SSC Shadow B B01 | 1 | PacNW White B01 | 1 | 2014 RCL B01 Div 3 | 0.71 | 2.38 |
| 2014-09-27 | PacNW White B01 | 2 | Slammers Orange B01 | 1 | 2014 RCL B01 Div 3 | 2.73 | 1.47 |

| date | home | | away | | venue | pred.home | pred.away |
|------------|------------------------------|---|------------------------------|---|--|-----------|-----------|
| 2014-09-20 | Whatcom Rangers Blue B01 | 4 | PacNW White B01 | 2 | 2014 RCL B01 Div 3 | 1.21 | 1.68 |
| 2014-09-14 | PacNW White B01 | 3 | Crossfire Premier C B01 | 0 | 2014 RCL B01 Div 3 | 3.50 | 0.55 |
| 2014-09-13 | PacNW White B01 | 2 | Kitsap Alliance FC Red B01 | 1 | 2014 RCL B01 Div 3 | 2.33 | 0.88 |
| 2014-09-06 | Blackhills FC Black B01 | 1 | PacNW White B01 | 2 | 2014 RCL B01 Div 3 | 0.84 | 3.15 |
| 2014-08-17 | PacNW White B01 | 1 | FC West Inter B01 | 4 | 2014 Mt Hood Challenge U13 | 0.64 | 2.38 |
| 2014-08-16 | PacNW White B01 | 2 | Pacific FC Blue B01 | 0 | 2014 Mt Hood Challenge U13 | 1.99 | 1.19 |
| 2014-08-16 | PacNW White B01 | 1 | Crossfire Oregon Green I B01 | 0 | 2014 Mt Hood Challenge U13 | 1.52 | 1.23 |
| 2014-08-15 | Washington Timbers Green B01 | 0 | PacNW White B01 | 4 | 2014 Mt Hood Challenge U13 | 0.92 | 2.48 |
| 2014-08-02 | PacNW White B01 | 0 | NW United Premier B01 | 5 | 2014 WA Rush Cup B13 Gold U13 | 1.50 | 1.47 |
| 2014-08-02 | TC United B01 | 4 | PacNW White B01 | 3 | 2014 WA Rush Cup B13 Gold U13 | 0.68 | 3.70 |
| 2014-08-01 | Westside Timbers Copa B01 | 7 | PacNW White B01 | 0 | 2014 WA Rush Cup B13 Gold U13 | 4.36 | 0.85 |
| 2014-07-21 | PacNW White B01 | 4 | WPFC Navy B01 | 0 | 2014 Nike Crossfire Challenge Bronze U13 | 2.87 | 0.47 |
| 2014-07-21 | PacNW White B01 | 2 | FC Alliance B B01 | 1 | 2014 Nike Crossfire Challenge Bronze U13 | 2.14 | 0.91 |
| 2014-07-20 | Snohomish United Red B01 | 0 | PacNW White B01 | 4 | 2014 Nike Crossfire Challenge Bronze U13 | 0.68 | 5.52 |
| 2014-07-19 | Crossfire Premier C B01 | 0 | PacNW White B01 | 3 | 2014 Nike Crossfire Challenge Bronze U13 | 0.55 | 3.50 |
| 2014-07-18 | FC Alliance B B01 | 0 | PacNW White B01 | 2 | 2014 Nike Crossfire Challenge Bronze U13 | 0.91 | 2.14 |
| 2014-06-15 | Crossfire Premier B B01 | 3 | PacNW White B01 | 1 | 2014 Rainier Challenge Copa U13 | 1.24 | 0.97 |
| 2014-06-15 | Crossfire Premier B B01 | 1 | PacNW White B01 | 0 | 2014 Rainier Challenge Copa U13 | 1.24 | 0.97 |
| 2014-06-14 | TSS Academy B01 | 1 | PacNW White B01 | 2 | 2014 Rainier Challenge Copa U13 | 1.03 | 1.32 |
| 2014-06-13 | PacNW White B01 | 5 | Eastside FC White B01 | 2 | 2014 Rainier Challenge Copa U13 | 2.72 | 0.96 |
| 2014-04-26 | Eastside FC Grey B01 | 3 | PacNW White B01 | 1 | 2013 Challenge Cup B01 Division 2 – Chal | NA | NA |